



ANNUAL REPORT 2023

SUNSHINE SOCIAL AND MEDICAL CENTRE VIETNAM

“

Love is so strong and powerful,
stronger than all the weapons
in the world. And it should be
given to everybody.”

- **Christina Noble OBE** -



CONTENTS

OUR VISION, MISSION, VALUES	5
PROGRAMME OVERVIEW	6
EXECUTIVE SUMMARY	7
OUR YEAR	7
PROGRAMME DESCRIPTION	12
OUR STORIES	17
ACKNOWLEDGEMENTS	20
FINANCIAL OVERVIEW	21

ABBREVIATIONS

CNCF	Christina Noble Children's Foundation
CRADC	Centre of Rehabilitation and Assistance for Disadvantaged Children
SSMC	Sunshine Social & Medical Centre
RCU	Residential Care Unit
HCMC	Ho Chi Minh City
MOLISA	Ministry of Labour, Invalids and Social Affairs



OUR VISION, MISSION, VALUES

Vision: A leading children's foundation protecting and empowering vulnerable children and changing lives.

Mission: The Christina Noble Children's Foundation (CNCF) is dedicated to serving the physical, medical, educational and emotional needs of vulnerable children. We believe that every child is an individual who deserves love, respect and freedom from all forms of abuse and exploitation. We establish long-term relationships with the children we support and empower them to live happy, emotionally rich, and independent lives.

Values: Our values represent our beliefs and guide how we behave. They are love, compassion, respect, honesty, and integrity.



PROGRAMME OVERVIEW

ESTABLISHED	1991
LOCATION	38 Tu Xuong Street, District 3, Ho Chi Minh City, Vietnam
OBJECTIVES	To provide orphaned and vulnerable children with access to high-quality comprehensive care so they can reach their full potential.
BENEFICIARIES	Children aged 2 to 16 years who are abandoned/orphaned or from impoverished families who suffer with malnourishment, cerebral palsy, hydrocephalus, and other varied poverty-related conditions; infants who are physically or developmentally impaired; and children who do not have access to preschool education.
LOCAL PARTNERS	The Ministry of Labour, Invalids and Social Affairs (MOLISA)
CNCF ACCOUNTABILITY	CNCF is responsible for funding. SSMC is jointly run with MOLISA, the CNCF Director of Operations is the Co-Director of the SSMC along with the Director appointed by MOLISA.

MONITORING AND EVALUATION

Daily monitoring visits on site at SSMC are conducted by CNCF's Vice Director. Information and updates about the children's wellbeing are collected through these daily visits. Regular meetings with the Director, SSMC, MOLISA and staff are held to provide project updates and to discuss any challenges. CNCF SSMC staff also have weekly meetings. Monthly and semi-annual reports prepared by our local partners and CNCF staff are provided to MOLISA and the CNCF Board of Management. An Annual Review and Annual Operation Report of the programme are also made available to all stakeholders. An annual evaluation of the programme is conducted by our local partner and CNCF Management for future planning.

2023 ACTUAL COSTS

\$401,109 USD

REPORTING PERIOD

January - December 2023

2024 OBJECTIVES

- To provide check-ups and on-site treatment for 90 children with malnutrition and disabilities at a time
- To provide rehabilitation intervention through physiotherapy to up to 60 children
- To provide special education intervention to 20 children with disabilities
- To provide pre-school education for 60 disadvantaged children
- To provide medical treatment for at least 3,000 disadvantaged community children

EXECUTIVE SUMMARY

In 2023, the Sunshine Social & Medical Centre (SSMC) remained committed in fulfilling its mission of delivering essential healthcare, nutritional support, physiotherapy-based rehabilitation, psychosocial care, as well as preschool education and day care services to infants and children who are orphans or come from disadvantaged backgrounds. Our dedicated team of healthcare professionals, caregivers, and educators continues to work tirelessly to ensure that each child receives the highest standard of care.

This year, our SSMC outreach team also provided examinations and treatments to 1,247 children (aged 0-16) in the Mekong Delta, South Vietnam. The team's additional planned outreach medical trips for conducting examinations in 2023 were hindered by unprecedented incidents in the country's highland provinces, leading to mandatory restrictions on mobility. This restriction severely limited SSMC's community outreach efforts and consequently, the number of communities supported fell short of our target in 2023. Despite facing unprecedented challenges, SSMC was still able to successfully provide remote support to 96 malnourished ethnic children in Kon Tum Province, located in the Central Highlands of Vietnam. SSMC remains actively involved in monitoring and supporting the monthly individual progress of these children through our local partners. This initiative also helped to raise significant awareness on malnutrition in these remote and rural communities, thereby contributing to a reduction in malnutrition rates nationwide.

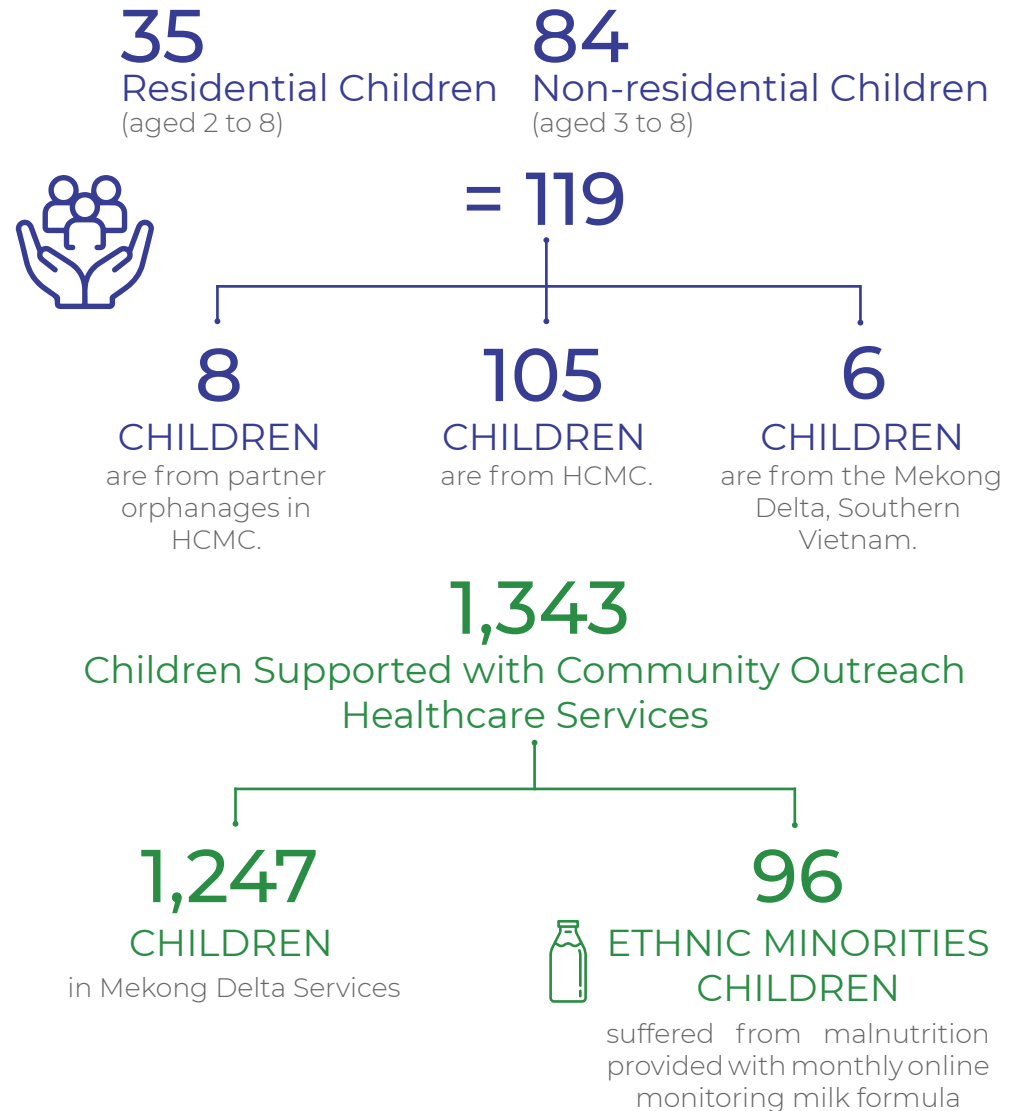
In addition to the successful construction of a child-friendly playground for the children thanks to the support of a local donor, festive celebrations with on-site play activities were organised throughout the year to facilitate the children's cognitive and social development.



OUR YEAR

In 2023, the total number of beneficiaries who received residential, non-residential and healthcare services under the SSMC programme in 2023.

1,462 



OUR YEAR

HEALTHCARE & PHYSIOTHERAPY



3,032 Physiotherapy Sessions were provided to 17 children. 80% of the children made significant progress.



25 New Residential and Day-care Children were diagnosed with malnutrition. At the end of 2023, **12 Children** had fully recovered from malnutrition.



20 Turns of Vaccinations (Including for Sabin, Measles, Mumps, Rubella, Encephalitis, Typhoid, Chicken Pox) were provided.




70 Team Case Conferences were organised.



OUR YEAR

OUTPATIENT CLINIC & COMMUNITY OUTREACH

 **1,343** Examinations and Treatments were provided to children (aged 0-16) through our outreach medical trips. 1,247 of these were provided in the Mekong Delta regions and 96 of these were provided in Kon Tum Province in central highlands in collaboration with our local partners.

Among them, **119 Treatments** were provided for children with malnutrition.

 **96** Ethnic Minorities Malnourished Children (aged 0 to 16) in Kon Tum Province were provided with monthly online monitoring, monthly nutritional milk and milk formula.

HOME VISITS

 **23** Initial Home Visits were conducted for child enrollment criteria assessments.

VOCATIONAL CLASSES

 **32** Children with Disabilities were provided with on-site vocational training courses.

STAFF TRAINING & WORKSHOPS

173 Turns of SSMC staff attended 04 childcare training sessions.

ADDITIONAL SUPPORT

74 Christmas Gifts were distributed to children.

65 Lunar New Year Gifts were distributed to children.



SSMC SON CA KINDERGARTEN



54 Children
(aged 3 to 5)
attended SSMC Son Ca Kindergarten.

At the end of the academic year 2022-2023, **43 children** were enrolled in the Kindergarten and were eligible to be assessed, of these children:



06 CHILDREN
from SSMC Hoa Mi Unit were enrolled in SSMC Son Ca Kindergarten for preschool education.



10 CHILDREN
with intellectual challenges attended SSMC's Special Education Class.





United Nations Sustainable Development Goals



Since inception, CNCF's Sunshine Social & Medical Centre has provided

- **OVER 1,684 CHILDREN** with full-time residential care
- **OVER 2,500 CHILDREN** with day care services and early childhood education at our kindergarten (Son Ca Songbird Unit)
- **OVER 192,500 CHILDREN** with free examinations and treatments at our outpatient clinics.



PROGRAMME DESCRIPTION

The Sunshine Social & Medical Centre (SSMC) is where the Christina Noble Children's Foundation (CNCF) began its life-changing programmes in 1991 and remains to this day the heart of the Foundation.

The Sunshine Social & Medical Centre provides healthcare, nutritional support, physiotherapy-based rehabilitation, psychosocial care, pre-school education and day care services to infants and toddlers who are orphaned and abandoned or come from poverty-stricken families. Educational support is provided for children with disabilities in the form of special needs classes and the kindergarten provides early childhood education to children from disadvantaged families.

Far too many children who arrive at SSMC continue to suffer from the crippling consequences of the long-ago Vietnam-American War. With over 20 million gallons of dioxins dropped between 1962 and 1971 and some still remaining in the ecosystem in many areas of Vietnam to this day, the lives of the third generation of children are still being affected by these toxic defoliants.

In 2015, the Sunshine Social and Medical Centre received the highest accolade bestowed by the Vietnamese Government, the prestigious Labour Order Medal. SSMC was recognised for excellence in service and care and for providing an integrated programme of services for abandoned babies, street children, sick and malnourished infants, and their parents.

The SSMC provides an international standard of care through the Non-residential Unit with Disabilities (NUD), Residential Care Unit (RCU, Hoa Mi Nightingale Unit) and Day Care Unit (Son Ca Songbird Unit).



Non-residential Unit with Disabilities (NUD) & Residential Care Unit (RCU; Hoa Mi Nightingale Unit)

Children in the NUD and RCU are between the ages of 2 and 16 years who suffer from a variety of conditions including malnutrition, cerebral palsy, Down syndrome, hydrocephalus, and respiratory impairments. Due to the parents' limited knowledge of nutritional care and their inability to provide the appropriate diets for their children, malnutrition becomes a very common health condition among children from poor families, with almost all children arriving at the SSMC suffering from malnutrition and related health issues.

On-site specialised and intensive healthcare provided includes nutritional support, supplements and medications, vaccinations, dental, eye check-ups and physiotherapy. Upon arriving, each child is assessed by our medical team who then implements an immediate healthcare plan to address the child's specific needs and monitors their progress daily.

All children are covered under an annual health scheme that includes a health check, dental check, and eye examination. Each child receives regular health assessments and, when needed, treatment and rehabilitative care to address specific medical and social needs. Children requiring more specialised treatment are referred to one of the main paediatric hospitals located in Ho Chi Minh City, the Children's Hospital Number 2 with whom we have close working relationships.

Each child at the Centre receives an individually tailored diet and is provided with well-balanced daily meals along with nutritional supplements (including Vitamin A). All residential children receive Sabin, Measles, Mumps, Rubella, Chicken Pox, Encephalitis, Typhoid vaccinations in accordance with the Ministry of Health's vaccination schedule.

Frequent case conferences are organised to assess each child's progress over our three areas of care: health, education and social well-being. Their development is also reviewed quarterly by the medical team including physiotherapists, speech therapists and nursing staff.



Physiotherapy

The SSMC provides early intervention physiotherapy-based rehabilitation for children with cerebral palsy, hydrocephalus and developmental delays. The Centre has two full-time physiotherapists who work closely with our medical staff and are included in all case discussions.

To support our non-residential children who otherwise have no access to healthcare due to financial hardship, our physiotherapists conduct special training sessions for the parents or guardians of the children, so they can continue to provide on-going physiotherapy at home.



Kindergarten (Son Ca Songbird Unit)

The Son Ca Kindergarten provides educational, nutritional and emotional development support to preschool children (ages 3 to 5) from the local community and some children living in the RCU. The day care support also enables the parents or guardians to attend or seek employment knowing that their children's overall needs are being met in a safe and loving environment.

Prior to enrolment, home visits are conducted to assess each family's circumstances and living conditions, allowing us to understand the needs and immediate requirements of each child coming into our care. After enrolment, each child undergoes an extensive assessment that measures physical wellbeing, awareness, language, and speech development and ability. Our classes follow the Vietnam National Curriculum for early childhood education with teaching methods modified to meet our children's learning needs. Dental checks and eye examinations are also provided to day care children.



PROGRAMME DESCRIPTION

Special Needs Education

Residential children with developmental delays are enrolled in specialised educational classes tailored to enhance their language and non-verbal communication, as well as fine and gross motor skills and decision-making abilities.

Vocational & Lifeskills Training

Non-residential children up to the age of 16 years old receive vocational and life skills training at the centre. This includes learning skills such as bead stringing for bracelet making, crafting bonsai trees using copper wire, hand-weaving fabrics, and flower arrangement. Additionally, life skills such as greetings, asking questions, personal hygiene, meal self-service, and clothing folding are taught. These classes and workshops are designed to help support the development of each child and young person and empower them with valuable skills.

Community Outreach Healthcare Programme and Nutrition

Our healthcare services are extended via our Community Outreach Programme, reaching many more children and families in need. In 2023, we conducted outreach trips in Mekong Delta region and continued providing treatments to malnourished children in need in remote areas in Kon Tum Province. These provinces are home to a large number of migrants from different parts of Vietnam living in subpar conditions. Malnutrition rates among these communities are significantly higher than the national average.



PROGRAMME DESCRIPTION

Health Talks

To ensure our children's families stay up-to-date with childcare knowledge and skills, CNCF facilitates health talks to provide basic medical knowledge to the parents and guardians. A survey is conducted at the end of each talk to evaluate their understanding of the information provided. This is to ensure families are retaining the information and leave with a greater understanding of the topic and are able to implement the knowledge in their own homes.



Events and Excursions

Social engagement activities are crucial for the overall wellbeing and development of children. CNCF organises a range of activities including outings with our volunteers and celebrations of international and national days such as Lunar New Year, Children's Day, Mid-autumn and Christmas.

Staff Training & Workshops

To support the delivery of our programme and empower the CNCF team, our SSMC staff attended training and workshops to keep up to date with global childcare best practice learnings ensuring our children continue to receive the highest quality of care.



REPORT 2023

OUR STORIES

Thanh's Journey To Health

Thanh* was born prematurely and spent her early months in a local orphanage before arriving at CNCF's Sunshine Social & Medical Centre at the age of 19 months. Upon the initial medical assessment, Thanh was diagnosed with malnutrition and psychomotor developmental delay. While she could recognise her name, her limited eye muscle control led to Strabismus (the crossing of her eyes). Thanh was able to sit, but her lower limb muscles were weak and her motor development level was that of a 9-month-old.

Under the dedicated care of our medical team, Thanh embarked on a journey of recovery. Every six months, a case conference was organised, allowing SSMC Doctors to monitor her progress closely. A tailored treatment and physiotherapy plan were developed for Thanh's specific needs. Furthermore, she underwent a thorough assessment at the city's Eye Hospital and was prescribed glasses to aid her condition. During her malnutrition recovery, timely treatment for her respiratory condition was delivered to ensure her wellbeing. Our team's positive and nurturing language approach also facilitated a strong connection with Thanh, significantly aiding her recovery process.

Thanh is a testament to resilience and determination. Despite her challenging early childhood, Thanh is now able to walk unaided and express herself using long sentences. Her recovery from malnutrition is complete, and her psychomotor development now aligns with her age. At the Centre, Thanh can eat independently and enjoys contributing by assisting the caregivers with garment folding. We are immensely proud of Thanh and her perseverance and remain grateful for the unwavering dedication of our team of doctors, nurses, and caregivers at SSMC who made this success possible.

**Name and identity changed to protect privacy*



OUR STORIES

From Frail Health To Flourishing

Phuong* was born weighing only 900 grams and was diagnosed with bilateral ventriculomegaly and retinopathy shortly after birth. Due to poverty and financial hardships, Phuong's family sought refuge for her at CNCF's Sunshine Social & Medical Centre when she was 20 months old, where she had access to critical medical interventions which would have been otherwise inaccessible. Upon assessment by CNCF Doctors, Phuong received a diagnosis of malnutrition and cerebral palsy (spastic lower limb paralysis), stemming from her premature birth. Despite her challenging conditions with increased muscle tone in her lower limbs and poor standing balance reflexes, Phuong was able to sit and stand, though her psychomotor development was that of an 11-month-old.

Through months of intensive treatment, attentive care and expertise from SSMC's skilled medical team, Phuong made significant improvements in her physical health. In addition to the medical treatment, a rehabilitation plan was developed for Phuong, consisting of regular physiotherapy intervention. As she steadily recovered from malnutrition, her muscle strength also improved. Additionally, Phuong was enrolled in special education classes to support her cognitive growth, where she learned invaluable self-care skills such as eating, drinking, and dressing.

Today, Phuong has fully recovered from malnutrition and has developed significant fine and cross motor skills. She can navigate stairs with handrails and has a keen understanding of her surroundings, expressing herself clearly in short sentences. Phuong's journey from frail health to flourishing as a joyful and thriving child underscores the importance of comprehensive care for every child.

**Name and identity changed to protect privacy*



OUR STORIES

Thank You From A Family

“I am very pleased to share with you that my granddaughter has made a full recovery from malnutrition after receiving care and treatment at the Sunshine Social & Medical Centre. In addition to her recovery, she is now able to walk unaided and has good coordination skills.

CNCF's support extended beyond my granddaughter to our entire family. We deeply appreciate the thoughtful assistance we received to the family too, CNCF has helped to change the trajectory of my granddaughter's life and significantly lessened our whole family's burdens. CNCF has gone above and beyond to ensure the wellbeing of our family and we are truly grateful for your dedication and commitment.

On behalf of our family, I would like to express our deepest gratitude to CNCF for their tireless efforts and unwavering support. We wish everyone good health, peace, and happiness in the coming year.”

- Grandmother of an SSMC Child -



ACKNOWLEDGEMENTS

Your generous contributions to the Sunshine Social & Medical Centre enable CNCF to consistently deliver high-quality healthcare to orphans and underprivileged children who lack access to such services. We strongly believe that a healthy childhood is crucial for a successful future. Thus, we remain dedicated to offering a secure and nurturing environment where children can thrive under the care and unwavering dedication of our team. Our holistic approach to early childhood support not only fosters physical, emotional, and psychological wellbeing but also enhances cognitive learning.

We are deeply grateful to our primary donors [Anonymous Foundation \(US\)](#) and [SHOEFabrik \(VN\)](#) for funding this project and laying a strong foundation of childhood for our children. Thank you also to the many kind individuals and organisations not mentioned for their additional support.

We would also like to acknowledge the [Ministry of Labour, Invalids and Social Affairs \(MOLISA\)](#) who jointly operates the Sunshine Social & Medical Centre with CNCF and makes it possible for us to implement the programme successfully.



REPORT 2023

FINANCIAL OVERVIEW

The total cost of running the Sunshine Social & Medical Centre in 2023 was:

\$401,109 USD

Heartfelt thanks to our kind donors who enable CNCF to keep this project operating and also to those who generously support with gift and time in-kind which enables us to keep our costs down.

Audit in progress at time of reporting.
Our audits can be found [here](#).



SUNSHINE SOCIAL AND MEDICAL CENTRE EXPENDITURES IN 2023

Expenditure	Amount (USD)
Medicines	3,018
Healthcare (Medical supplies, materials, health check ups, hospital fees)	7,982
Food & nutritional supplements (Including vitamins, milk formula) for children & fuel for kitchen	42,809
Entertainment for children (Cultural festival, excursions)	1,728
Professional Trainers (Vocational Training for Children)	4,952
Children's supplies	2,707
Office supplies (Teaching aids, forms & medical records)	148
Electricity & Water	11,393
Telephone & Postage	596
Repairs & Maintenance (Machinery & Building)	5,671
Playground Refurbishment & Equipment	2,596
Petrol & Transportation	1,699

SUNSHINE SOCIAL AND MEDICAL CENTRE EXPENDITURES IN 2023

Expenditure	Amount (USD)
Community outreach travel	2,038
Official partner visits (MOLISA & others)	1,150
Centre Staff uniform	2,861
Centre Staff salaries x 44 Staff	261,184
Centre Staff night shift	14,547
Centre Management Cost	13,751
CNCF Project Management Staff salaries x 2 Staff	17,178
Miscellaneous	3,101
TOTAL COST	401,109



For more information on this report and our CNCF projects in Vietnam, please contact:

-  38 Tu Xuong Street, Dist.3, Ho Chi Minh City, Vietnam
-  +84 283 932 6484
-  international@cncf.org
-  www.cncf.org
-  Christina Noble Children's Foundation
-  [@ChristinaNobleChildrensFoundationInt](https://www.facebook.com/ChristinaNobleChildrensFoundationInt)
-  [@CNCF_int](https://twitter.com/CNCF_int)
-  Christina Noble Children's Foundation